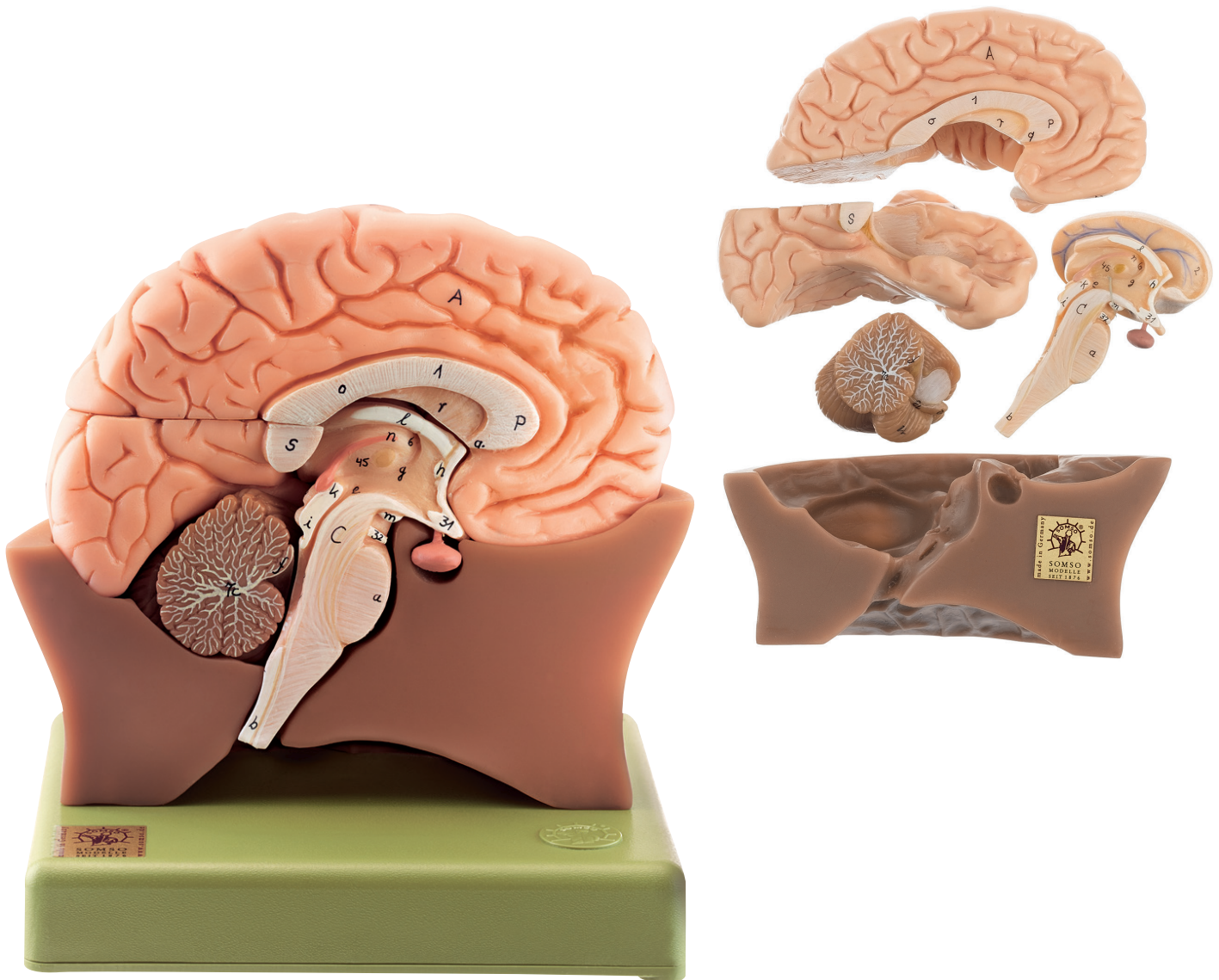


ANATOMY

Head and Nervous System

Nature is our Model



MB4/2 • HALF OF THE BRAIN

Natural size, in SOMSO-PLAST®. Separates into 4 parts: frontal and parietal lobes, temporal and occipital lobes, medulla and cerebellum. Removable on a green base. Height: 18 cm, width: 17.5 cm, depth: 14 cm, weight: 950 g