

Adam, Rouilly

SERVING MEDICAL EDUCATION WORLDWIDE

AR421 RECTAL EXAMINATION, STOOL ASSESSMENT AND ENEMA TRAINING MODEL

Instruction Manual



sia spinal
injuries
association

FOR LIFE AFTER SPINAL CORD INJURY

Thank you for purchasing this **AR421 Rectal Examination, Stool Assessment and Enema Training Model**

Our Rectal Examination Model has now been improved. We are delighted to have worked in collaboration with the **Spinal Injuries Association** to offer additional functionality making the model more versatile and lifelike than ever before.

The Improved Rectal Examination Model now offers **stool assessment, general examination, stool extraction and enema training in one portable model.**

Since the model can now accept liquid enemas, training in the use of **liquid rectal medication** is now possible.

A comprehensive calendar style flip guide is also included, showing the **Bristol Stool Scale** and **photographic representations of 13 important common and less common rectal conditions.**

The model offers the ideal training solution for OSCEs, nurse training or those involved with patient care.

Please read this instruction manual carefully and retain it for future reference.

Skills

- Patient communication, consent and chaperone procedures
- Identification of common and less common rectal conditions
- Rectal examination, stool assessment and the Bristol Stool Scale
- Identification of an abnormality palpable in the wall of the anal canal
- Enema administration and irrigation
- Administering of liquid rectal medication

Features

- Easy to use, minimal maintenance
- The internal anatomy has been redesigned and produced in a softer, more lifelike material
- 4 interchangeable rectal inserts for stool assessment/general examination, stool extraction, identification of an abnormality in the rectal wall and enema/liquid medicine administration
- Flip style guide containing the Bristol Stool Chart as well as 13 photographic rectal conditions for enhanced training
- Representations of 9 types of stool ranging from soft to hard
- 2 hard stools for stool extraction
- With use of the Enema insert, the model can now accept liquid rectal medication, e.g. rectal Diazepam, or enemas and micro enemas or can be used for irrigation procedures

Safety and Precautions



The images of anal conditions are the copyright of Science Photo Library/ Wellcome Collection as indicated. They are for sole use with the AR421 Rectal Examination, Stool Assessment and Enema Training Model. These images may not be extracted, copied, sold, displayed, projected or reproduced in any format without prior consent.



The booklet for training contains images of anal conditions and should only be viewed by healthcare professionals.



The material used in the anal canal is very delicate. Lubricating jelly (supplied) and examination gloves must always be used during use. Failure to do so may result in severe damage to the anal canal in the model.



Do not leave or store anal canals against the torso. These must be repositioned in the storage block in the supplied rigid carrying case.



Stools must be lubricated with lubricating jelly before use.



Use of other lubricants may damage the model. It is imperative that **ONLY** lubricating jelly is used with this simulator. We accept no responsibility for models damaged to due incorrect use.

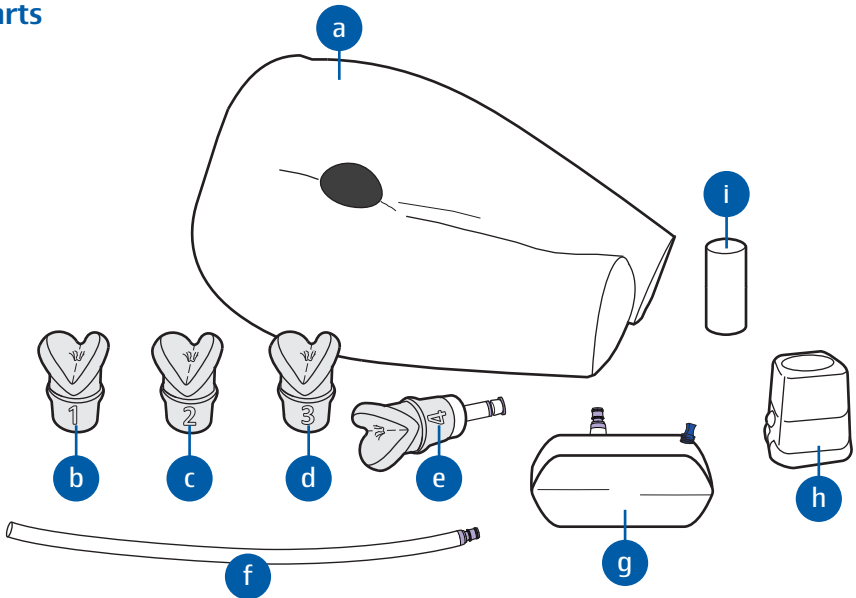


Please treat the simulator with the same care you would a patient.










Contents

Parts	4
- Supplied With	5
Before Use	
- Removing Rectal Inserts	7
- Installing Rectal Inserts	7
- Rectal Insert 1: Using Simulated Stools 1 - 8	9
- Rectal Insert 1: Using Simulated Stool 7	9
- Rectal Insert 2: Using Simulated Stools 10 and 11	11
- Rectal Insert 3	13
- Rectal Insert 4	13
- Rectal Insert 4: Using the Enema Collection Bottle	13
- Rectal Insert 4: Using the Enema Drainage Tube	13
During Use	
- Rectal Examination/Insertion of Enemas/Irrigation/Medication	15
After Use	
- Remove and Wash Rectal Inserts, Simulated Stools and Enema Collectors	15



Parts



Simulated Stools for Assessment (1 - 7 Based on the Bristol Stool Scale)

- | | |
|---|---|
| <p>1  Separate hard lumps, like nuts (hard to pass)</p> | <p>6  Fluffy pieces with ragged edges, a mushy stool</p> |
| <p>2  Sausage shaped, but lumpy</p> | <p>7  Watery, no solid pieces (balloon to be filled with 15ml of water)</p> |
| <p>3  Like a sausage but with cracks on the surface</p> | <p>8  Impacted stool</p> |
| <p>4  Like a sausage or snake, smooth and soft</p> | <p>9  Insert to retain stool numbers 7, 10 and 11</p> |
| <p>5  Soft blobs with clear cut edges (passed easily)</p> | |

Simulated Stools for Extraction

- | | |
|--|--|
| <p>10  Small stool samples for manual evacuation</p> | <p>11  Large samples for manual evacuation</p> |
|--|--|

- a Main body
- b Rectal insert 1: Stool assessment/general examination
- c Rectal insert 2: Stool extraction/manual evacuation.
- d Rectal insert 3: Identification of an abnormality in the rectal wall
- e Rectal insert 4: Enema/liquid medicine administration
- f Enema drainage tube
- g Enema collection bottle
- h Stool holder
- i Rectal insert removal tool

Supplied With

S421/1 FLIP STYLE GUIDE WITH BRISTOL STOOL SCALE AND 13 PHOTOGRAPHIC RECTAL CONDITIONS

SPAR421/A SET OF SIMULATED STOOLS

S321B LUBRICATING JELLY

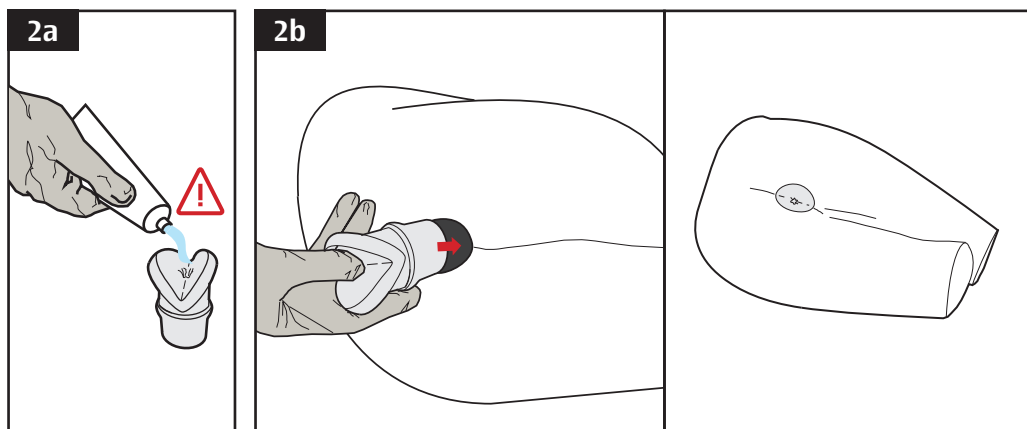
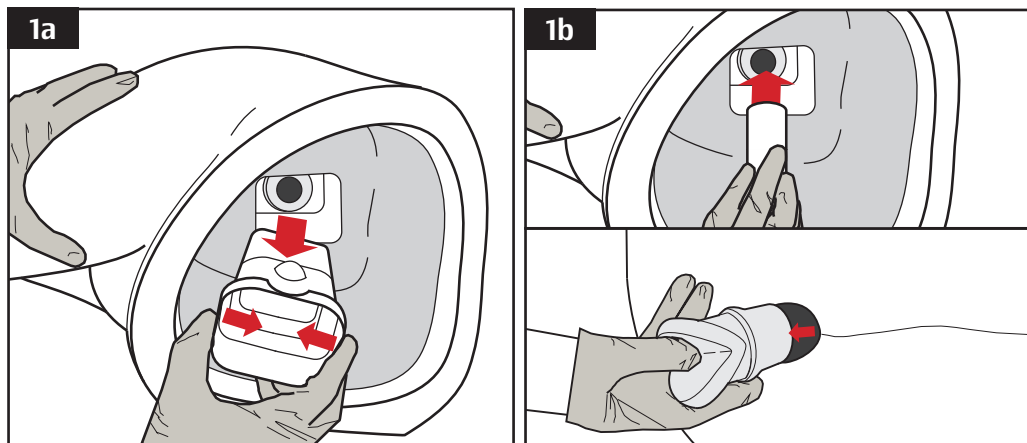


If you require replacement parts please contact our Sales Department, quoting codes where applicable.



Scan the QR code to access the product video.
<https://youtu.be/mlolpOJlJcw>

Before Use



Removing Rectal Inserts

Ensure the work area is clean and dry.

The model ships with **Rectal Insert 1 for Stool assessment/general examination** already installed. To use this insert see **3a** page 9

1a

To swap inserts, remove the stool holder by exerting pressure on the indented lip and pull the holder out of the model.

1b

Using the rectal insert removal tool, gently push the rectal insert from inside the model. Once the insert has advanced from the main body, it may be removed from the outside of the main body.

A different rectal insert can now be used.

Installing Rectal Inserts

2a

Lubricate the inside of the anal canal using lubricating jelly.



The material used in the anal canal is very delicate. Lubricating jelly (supplied) and examination gloves must always be used during use. Failure to do so may result in severe damage to the anal canal in the model.

2b

Install the rectal insert into the channel in the main body of the model, so that it sits flush with the body as shown.

The model is now ready for use:

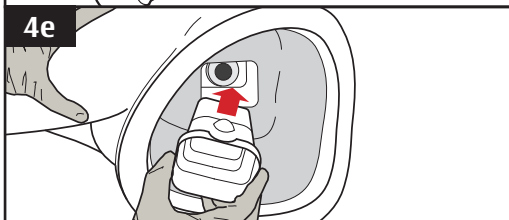
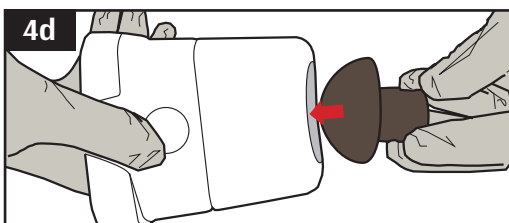
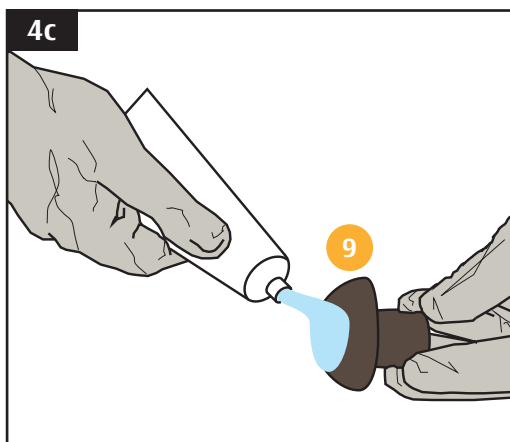
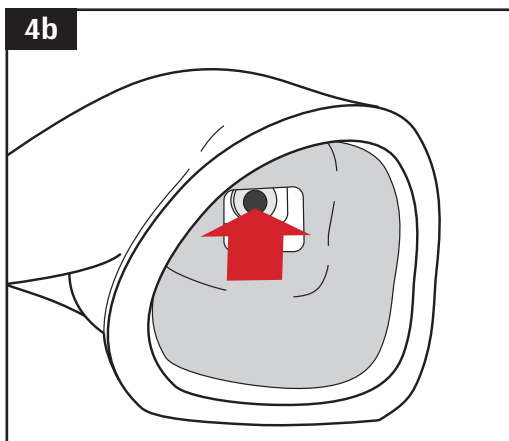
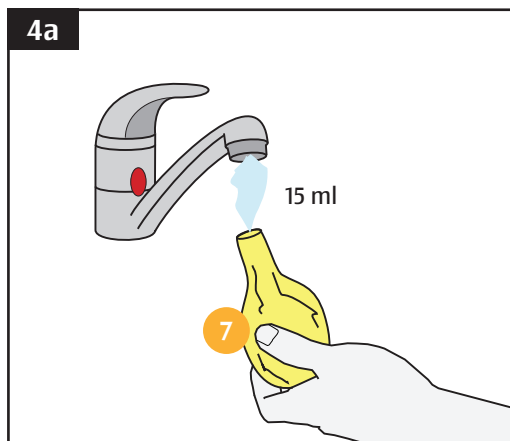
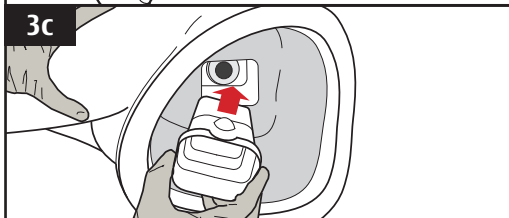
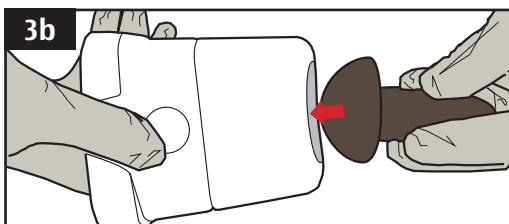
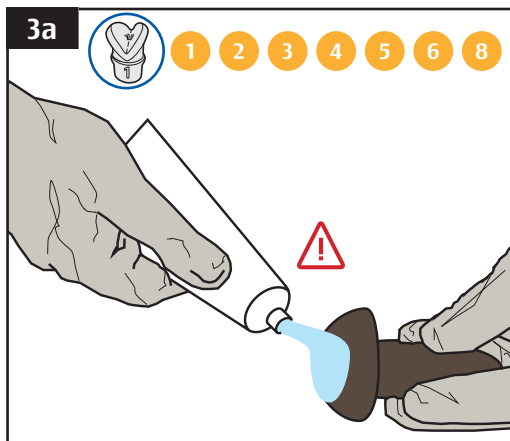
Rectal Insert 1 for stool assessment/general examination see **3a** page 9,

Rectal Insert 2 for stool extraction/manual evacuation see **5a** page 11,

Rectal Insert 3 for identification of an abnormality see **8a** page 13,

Rectal Insert 4 for enema/liquid medicine administration see **9a** page 13

Before Use



Rectal Insert 1: Using Simulated Stools 1 - 8

Simulated stools 1 - 8 have been designed specifically for use with Rectal Insert 1 for stool assessment.

3a

Lubricate the selected stool using lubricating jelly.



Stools must be lubricated with lubricating jelly before use.

3b

Insert the stool into the stool holder by positioning the round end of the stool into the round indent in the stool holder.

3c

Insert the stool holder into the channel inside the model, pushing until a “click” confirms that it is locked into position.

The simulator is now ready for use.

Rectal Insert 1: Using Simulated Stool 7

4a

Fill balloon with approximately 15 ml of water.

4b

Fasten the balloon and place directly into anal canal from inside model. Apply some lubricating jelly if required.

4c

Cover stool retainer number 9 with lubricating jelly.

4d

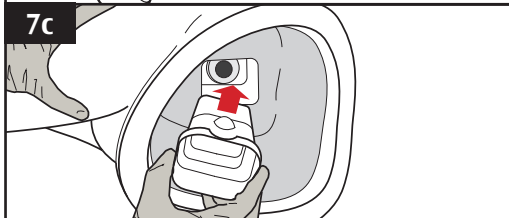
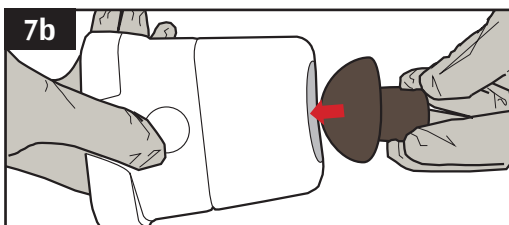
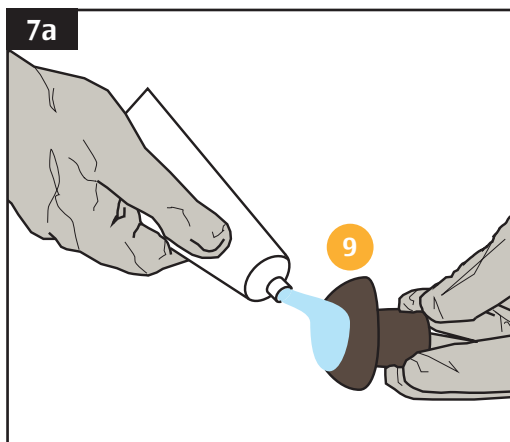
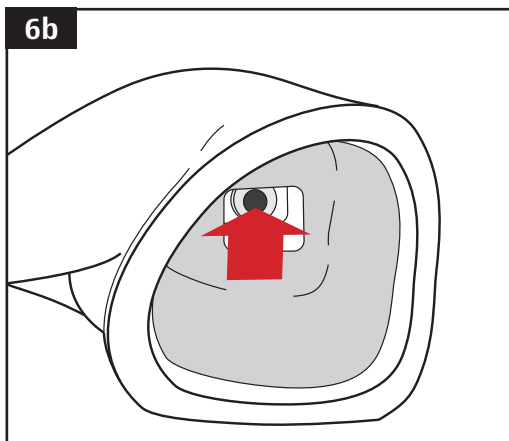
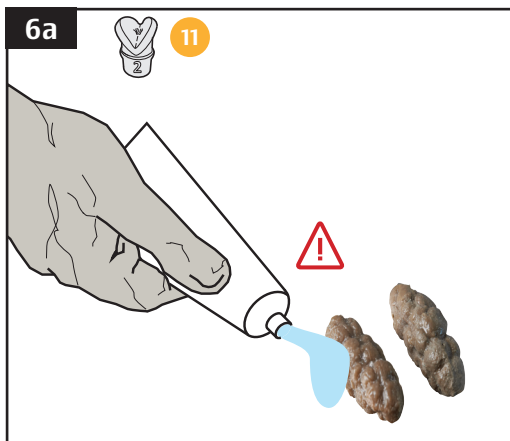
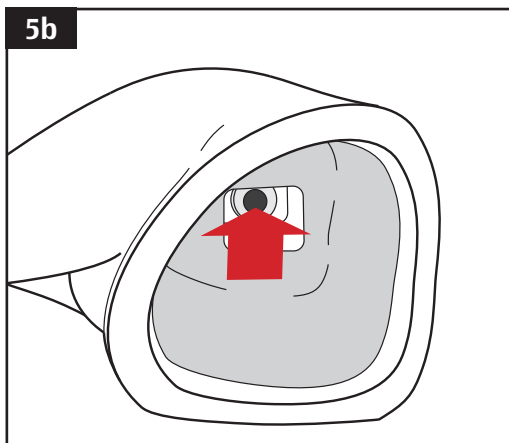
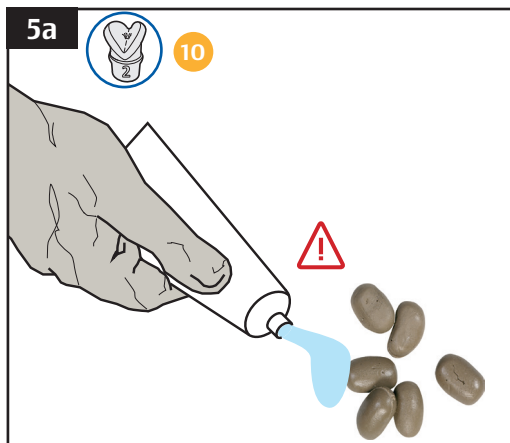
Insert stool retainer number 9 into the stool holder.

4e

Insert the stool holder into the channel inside the model, pushing until a “click” confirms that it is locked into position.

The simulator is now ready for use.

Before Use



Rectal Insert 2: Using Simulated Stools 10 and 11

Simulated stools 10 and 11 have been designed specifically for use with Rectal Insert 2 for stool extraction/manual evacuation.

Stool 10

5a Lubricate small stool samples using lubricating jelly.



Stools must be lubricated with lubricating jelly before use.

5b Place the loose stools directly into anal canal from inside model. See **7a**

Stool 11

6a Lubricate large stool samples using lubricating jelly.



Stools must be lubricated with lubricating jelly before use.

6b Place the loose stools directly into anal canal from inside model. See **7a**

Stool Retainer 9

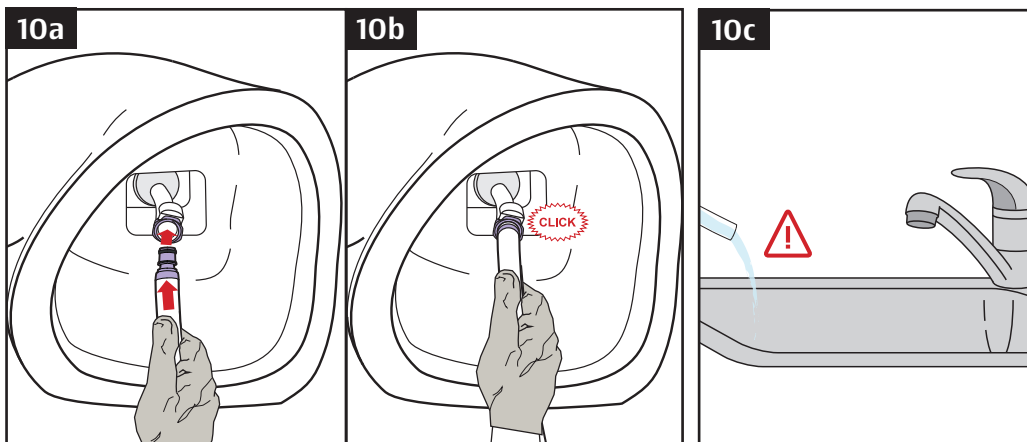
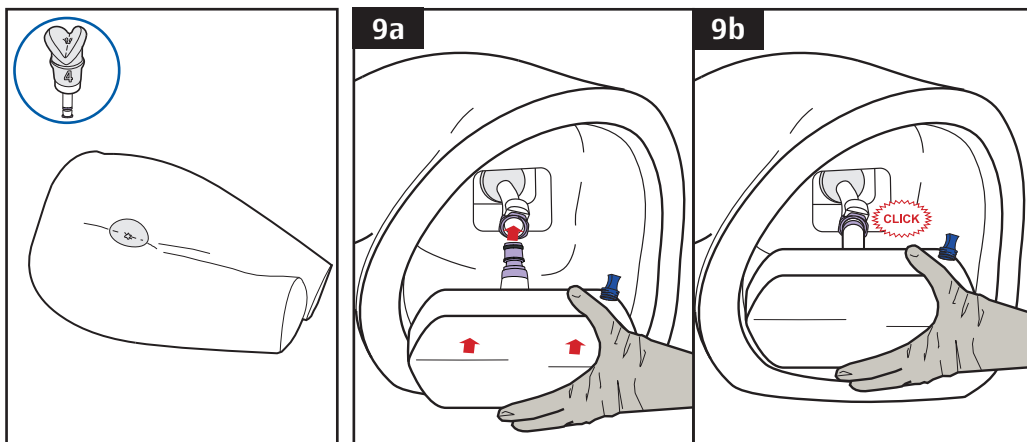
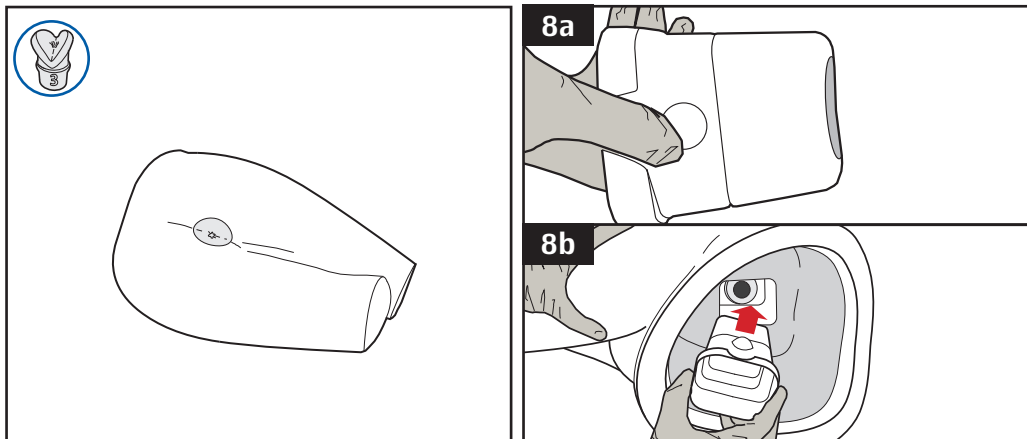
7a Cover stool retainer number 9 with lubricating jelly.

7b Insert stool retainer number 9 into the stool holder.

7c Insert the stool holder into the channel inside the model, pushing until a “click” confirms that it is locked into position.

The simulator is now ready for use.

Before Use



Rectal Insert 3

Rectal Insert 3 has an abnormality in the rectal wall which can be identified with proper examination of the anal canal.

8a

Lubricate and install rectal Insert 3 in the main body. See **2a**

8b

Insert the stool holder into the channel inside the model, pushing until a “click” confirms that it is locked into position. Using the stool holder prevents lubricant from entering the inside of the main body

The simulator is now ready for use.

Rectal Insert 4

Rectal Insert 4 has been designed to facilitate training in enemas, irrigation and insertion of liquid medication.

The enema collection bottle holds **800 ml**. If this capacity is not sufficient we recommend using the enema drainage tube.

Rectal Insert 4: Using the Enema Collection Bottle

9a

Lubricate and install rectal Insert 4 in the main body- see **2a**
Place the enema collection bottle inside the model. Be sure that bottle connector is orientated upwards, and the blue drainage bung is on the right.

9b

Guide the tube at the top of the enema collection bottle into the quick release connector from Rectal Insert 4, until it clicks into place.

The simulator is now ready for use.

Rectal Insert 4: Using the Enema Drainage Tube

10a

With Insert 4 installed in the main body, connect the enema drainage tube inside the model.

10b

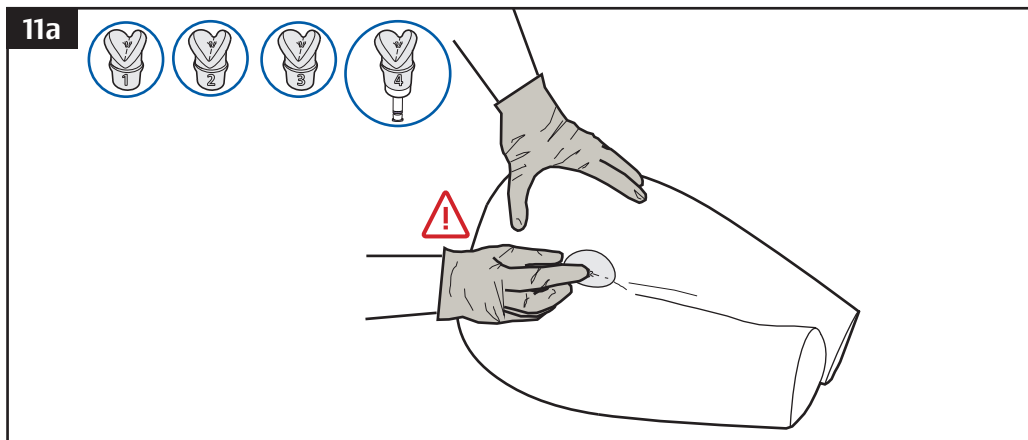
Guide connector end of the tube into the quick release connector from Rectal Insert 4, until it clicks into place.

10c

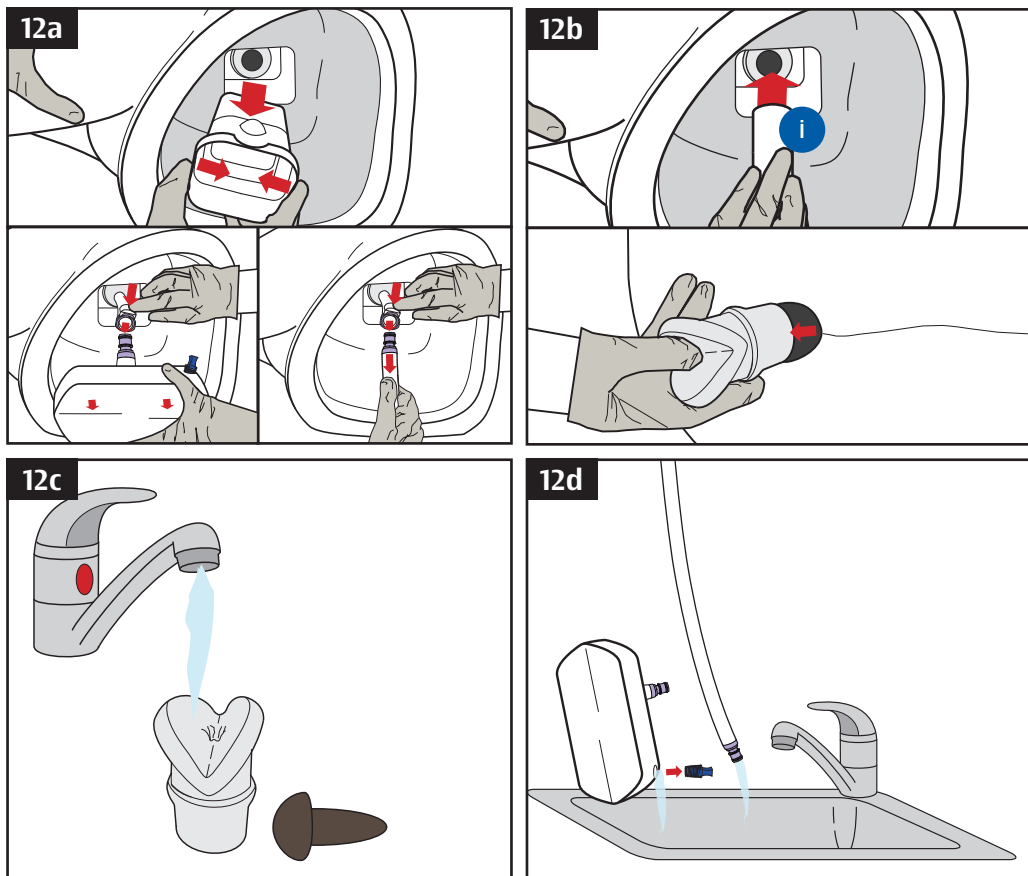
Ensure the drainage tube is placed into a sink or container to collect liquid expelled from the model during procedures.

The simulator is now ready for use.

During Use



After Use



Rectal Examination/Insertion of Enemas/Irrigation/Medication

11a

During use, insert a gloved finger into rectum carefully to assess stool type or perform an extraction.

Enemas, irrigation devices and medication applicators should be adequately lubricated with lubricating jelly before insertion.



The material used in the anal canal is very delicate. Lubricating jelly (supplied) and examination gloves must always be used during use. Failure to do so may result in severe damage to the anal canal in the model.

Remove and Wash Rectal Inserts, Simulated Stools and Enema Collectors

12a

After use, remove the stool holder and any simulated stools still in the rectal inserts.

If using Rectal Insert 4, press and hold the white quick-release connector button to disconnect the enema collection bottle or drainage tube.

12b

Using the rectal insert removal tool (see page 4), gently push the rectal insert from inside the model. Once the insert has advanced, it may be removed from the outside of the main body.

12c

To prolong the life of this simulator, it is essential that the anal canal and stools are removed, and washed in warm water after each training session.

12d

Empty the enema collection bottle by removing the blue bung and allow to drain. Empty the enema drainage tube. Wash both with a mild soap solution and allow to dry.

The outside of the model may be washed with a soft cloth and mild soap solution.

Store the simulator with Rectal Insert 1 installed in the model and remaining inserts repositioned in the storage block in the supplied rigid carrying case.



Do not leave or store the simulator with stools inside the inserts or liquids inside inserts or collection bottle.



Do not leave or store anal canals against the torso. These must be repositioned in the storage block in the supplied rigid carrying case.

2 Year Guarantee



All products manufactured by Adam,Rouilly are covered by our full 2 Year Guarantee. This guarantee applies to models which have been used correctly and covers durability and functionality.

Adam,Rouilly

As part of our policy of continual product development, the specification of products may alter without prior notice.

Adam,Rouilly has over 100 year's experience in providing quality medical models and simulators.

Should you require any further information please contact our Sales Department who will be pleased to help with your enquiry.

Adam,Rouilly Limited
Castle Road
Eurolink Business Park
Sittingbourne
Kent
United Kingdom
ME10 3AG

T: +44(0)1795 471378

F: +44(0)1795 479787

E: sales@adam-rouilly.co.uk

www.adam-rouilly.co.uk